

Confidential Briefing

**Health Reform and System Transformation:  
Implications for Nursing**

*Nursing Organizations Alliance Fall Summit  
November 20, 2015  
Palm Springs, CA*

*Paul H. Keckley, Ph.D., Managing Director  
Navigant Center for Healthcare Research and Policy Analysis  
Washington DC*

Navigant Center for Healthcare Research and Policy Analysis

---

---

---

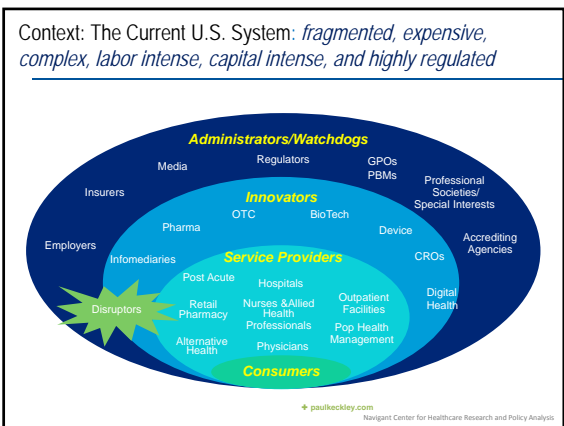
---

---

---

---

---



---

---

---

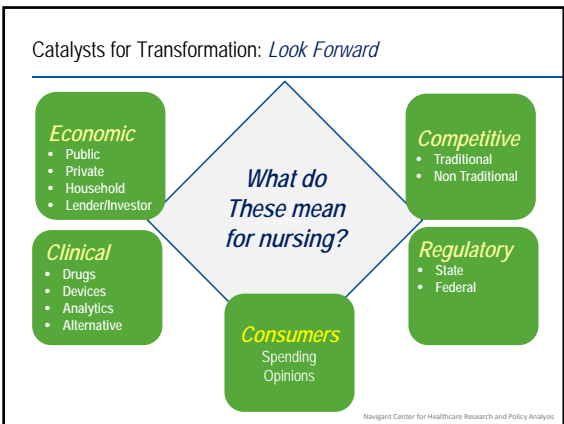
---

---

---

---

---



---

---

---

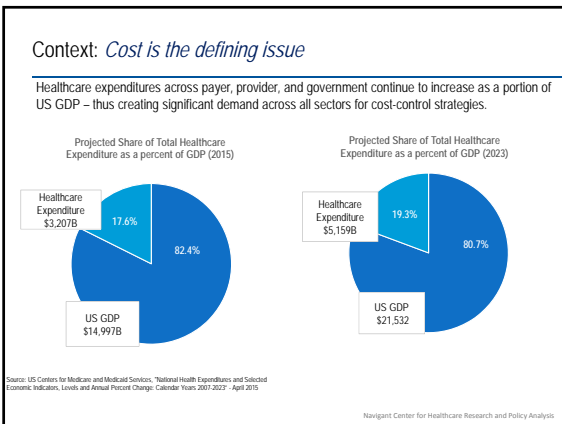
---

---

---

---

---




---

---

---

---

---

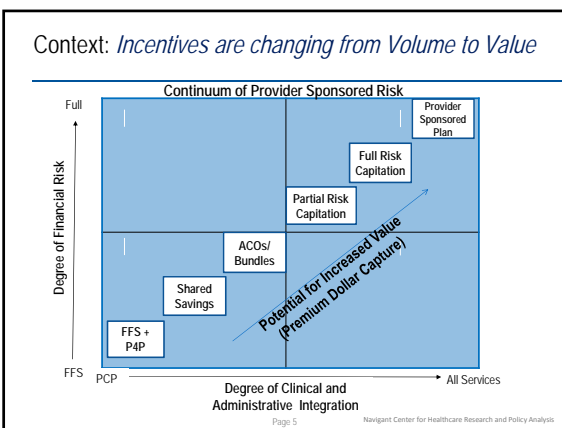
---

---

---

---

---




---

---

---

---

---

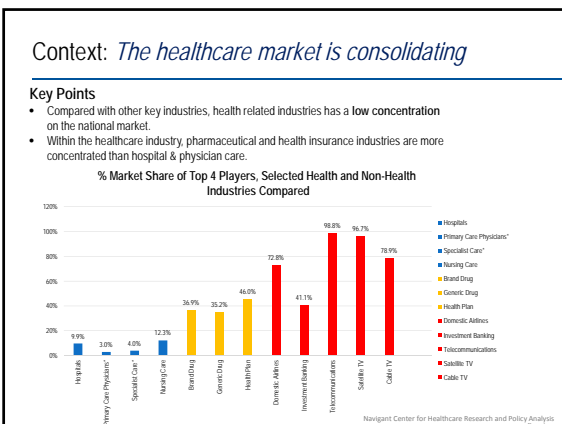
---

---

---

---

---




---

---

---

---

---

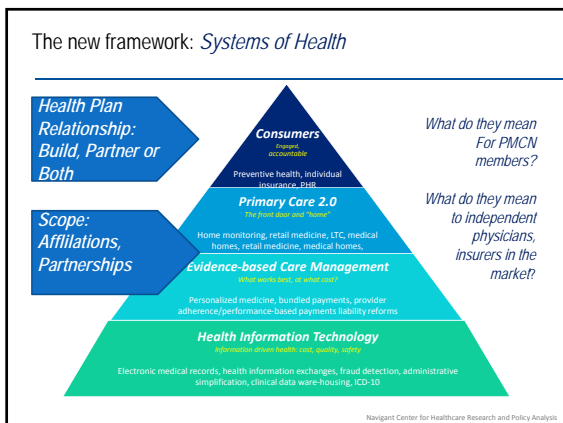
---

---

---

---

---




---

---

---

---

---

---

---

---

- Transitions: Old Rules to New Rules
- » All healthcare is local to *most healthcare is local*
  - » *Quality and safety perceived to quality, safety, efficiency & costs transparent and accessible*
  - » Incentives to do more to *incentives to do the right things in a coordinated model*
  - » Employers as observers to *employers as value-activists*
  - » Plans as payers to plans *as customers*
  - » Patients as users to *consumers as purchasers*
  - » *Scope and scale expanded*
- Navigant Center for Healthcare Research and Policy Analysis

---

---

---

---

---

---

---

---

Implications for Nursing

<i>Expansion of Roles</i>	<i>Challenges</i>
<i>Scope of Practice</i>	<i>Professional Accountability</i>
<i>Team Orientation</i>	<i>Use of data: Clinical + Financial + Operational Data</i>
	<i>Use of technologies</i>
	<i>Leadership in Advocacy</i>

9  
Navigant Center for Healthcare Research and Policy Analysis

---

---

---

---

---

---

---

---

---

Contact information:

Paul H. Keckley, Ph.D., Managing Director, Navigant Center for  
Healthcare Research and Policy Analysis, Washington DC  
[Paul.Keckley@Navigant.com](mailto:Paul.Keckley@Navigant.com)/312-573-4113

To subscribe to Pulse Weekly visit: [NavigantHRP.com/pulse-weekly](http://NavigantHRP.com/pulse-weekly)

10 Navigant Center for Healthcare Research and Policy Analysis

---

---

---

---

---

---

---

---